

Anti HDGF Antibody

Catalog No: tcsa18913



Available Sizes

Size: 100μl



Specifications

Application:

WB, IHC

Species Reactivity:

Human, Mouse, Rat

Host Species:

Rabbit

Immunogen / Amino acids:

Recombinant protein of human HDGF

Conjugation:

Unconjugated

Clonality:

Polyclonal

Isotype:

IgG

Form:

Liquid

Storage Buffer:

PBS with 0.02% sodium azide, 50% glycerol, pH7.3.

Recommended Dilution:

WB 1:500 - 1:2000

IHC 1:50 - 1:200

Storage Instruction:

Store at -20C. Avoid freeze / thaw cycles.

Alternative Names:

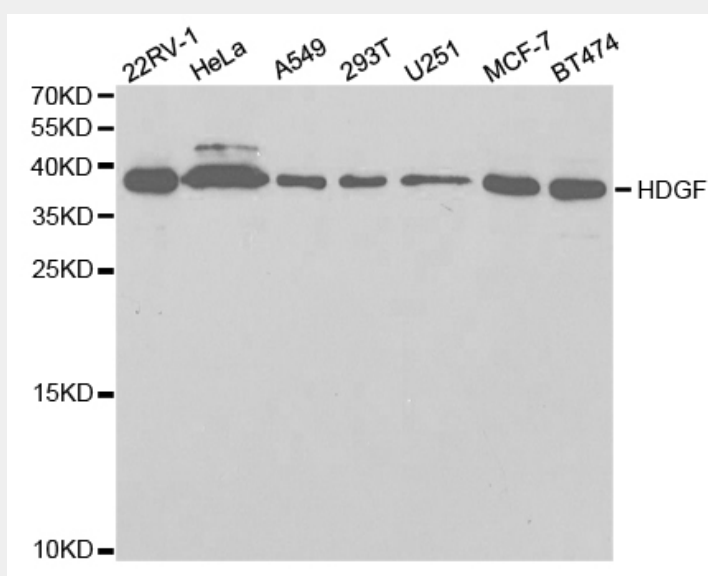
HDGF antibody; Hepatoma-derived growth factor antibody; HDGF antibody; High mobility group protein 1-like 2 antibody; HMG-1L2 antibody; HDGF antibody; HMG1L2 antibody

SwissProt:

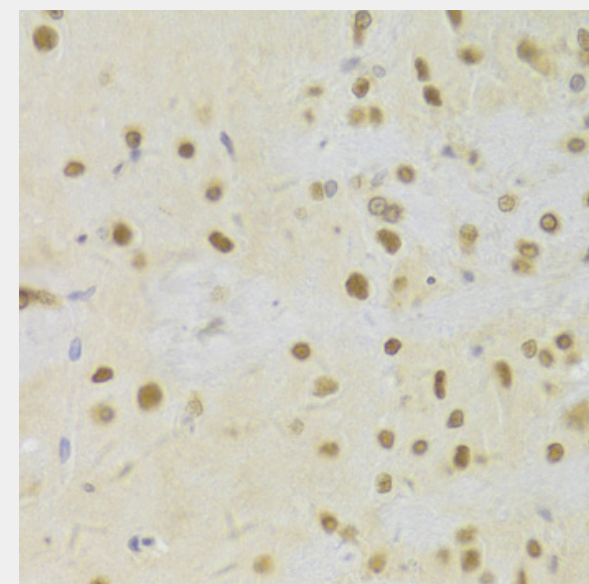
P51858

Product Description

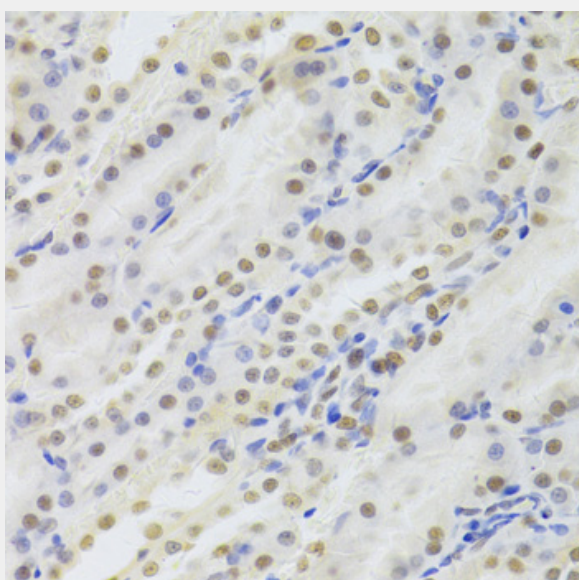
This gene encodes a member of the hepatoma-derived growth factor family. The encoded protein has mitogenic and DNA-binding activity and may play a role in cellular proliferation and differentiation. High levels of expression of this gene enhance the growth of many tumors. This gene was thought initially to be located on chromosome X; however, that location has been determined to correspond to a related pseudogene. Alternatively spliced transcript variants encoding distinct isoforms have been described.



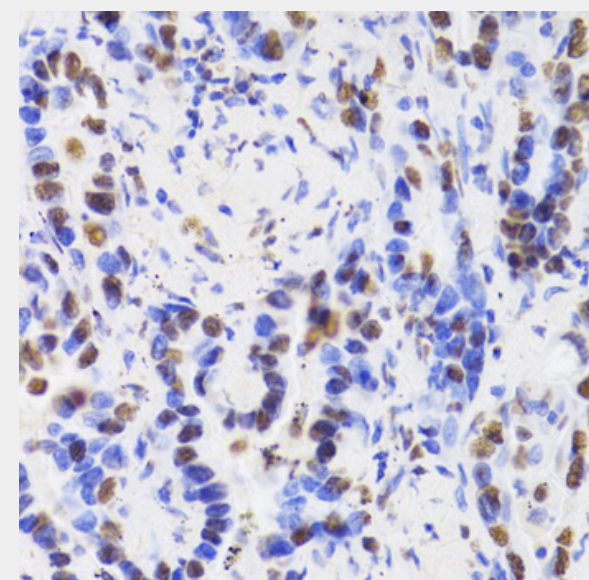
Western blot analysis of extracts of various cell lines, using HDGF antibody at 1:1000 dilution. Secondary antibody: HRP Goat Anti-Rabbit IgG (H+L) at 1:10000 dilution. Lysates/proteins: 25ug per lane. Blocking buffer: 3% nonfat dry milk in TBST. Detection: ECL Basic Kit. Exposure time: 90s.



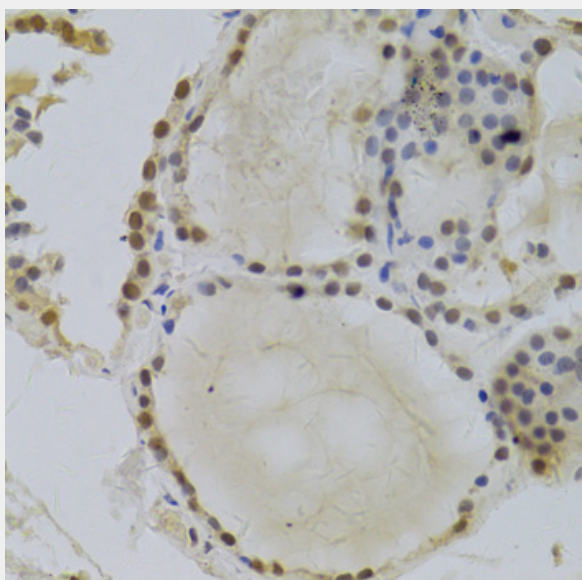
Immunohistochemistry of paraffin-embedded rat brain using HDGF Antibody at dilution of 1:100 (40x lens).



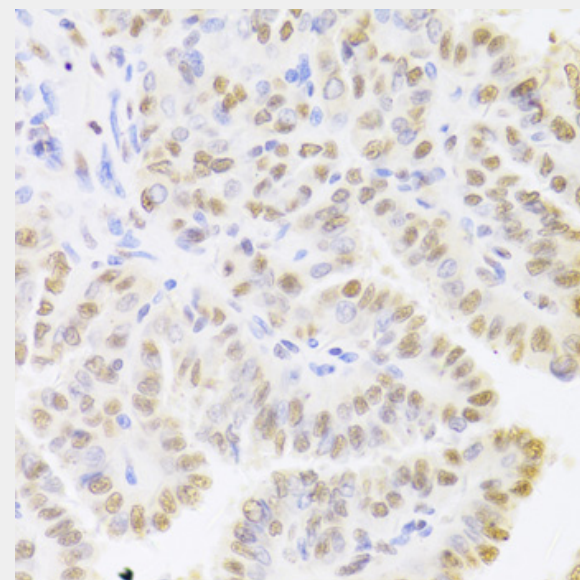
Immunohistochemistry of paraffin-embedded rat kidney using HDGF Antibody at dilution of 1:100 (40x lens).



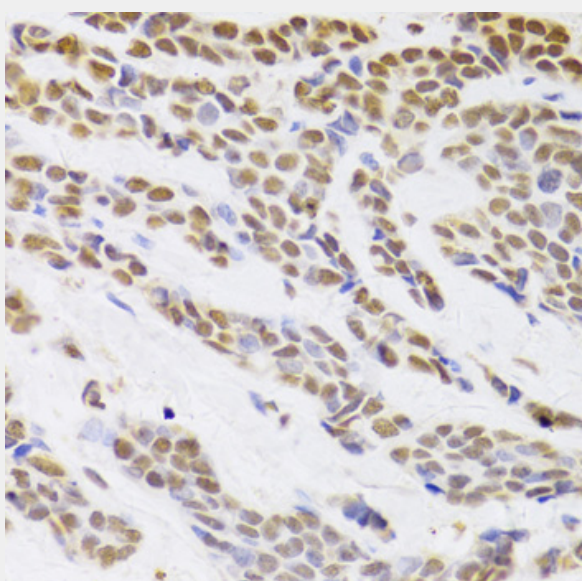
Immunohistochemistry of paraffin-embedded human lung cancer using HDGF Antibody at dilution of 1:100 (40x lens).



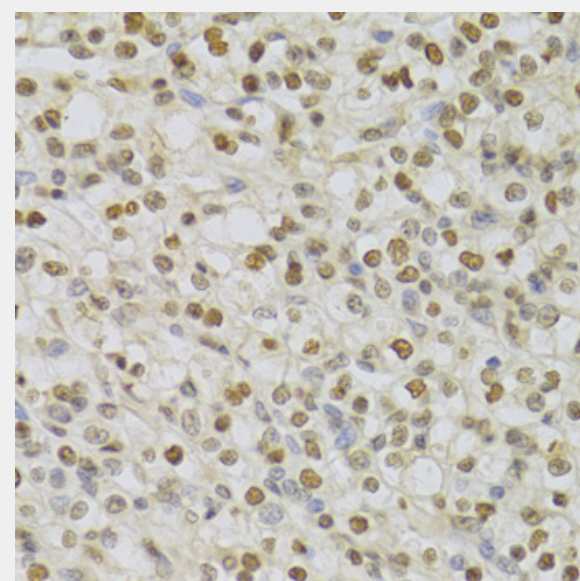
Immunohistochemistry of paraffin-embedded human thyroid using HDGF Antibody at dilution of 1:100 (40x lens).



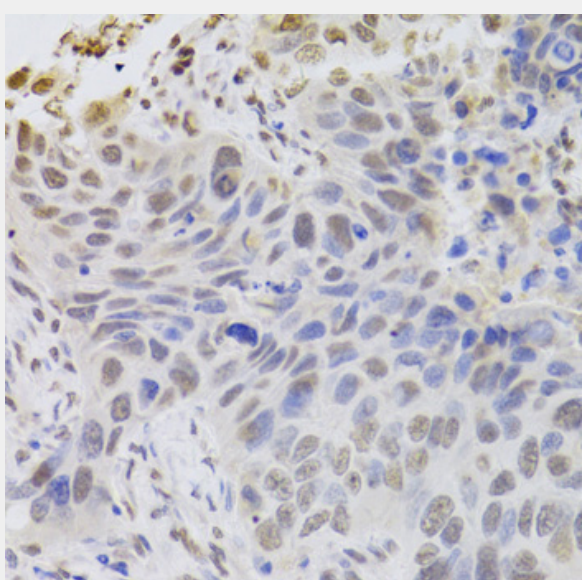
Immunohistochemistry of paraffin-embedded human thyroid cancer using HDGF Antibody at dilution of 1:100 (40x lens).



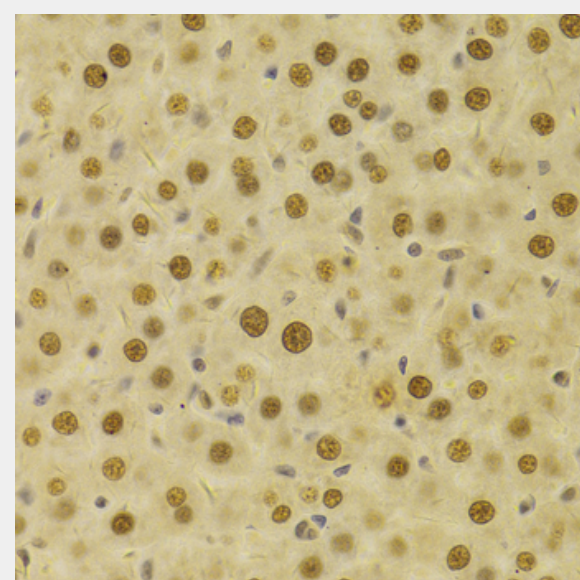
Immunohistochemistry of paraffin-embedded human breast cancer using HDGF Antibody at dilution of 1:100 (40x lens).



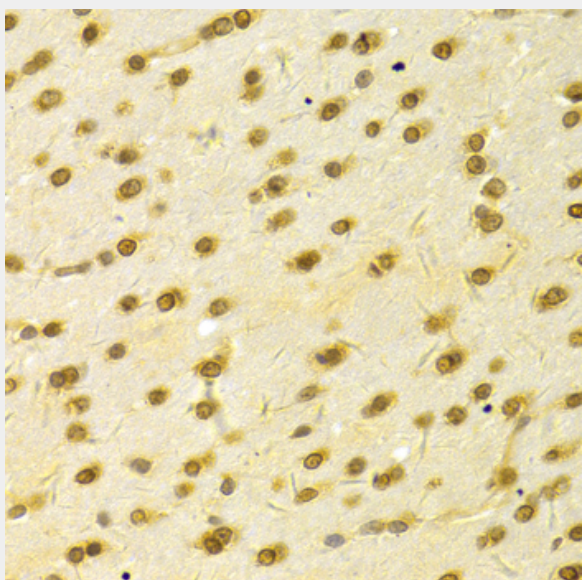
Immunohistochemistry of paraffin-embedded human kidney cancer using HDGF Antibody at dilution of 1:100 (40x lens).



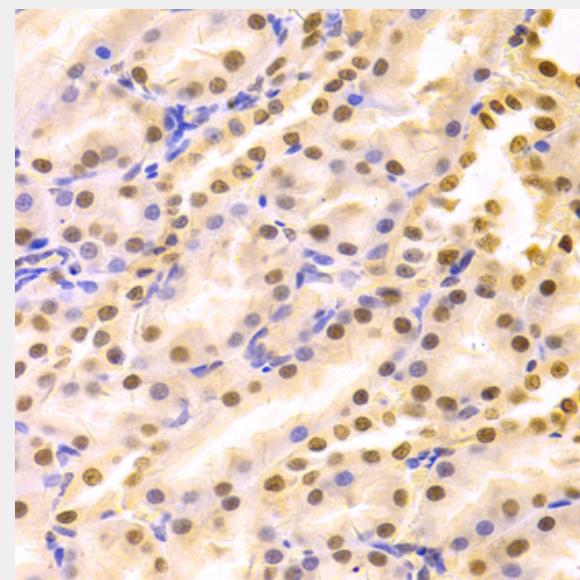
Immunohistochemistry of paraffin-embedded human esophageal cancer using HDGF Antibody at dilution of 1:100 (40x lens).



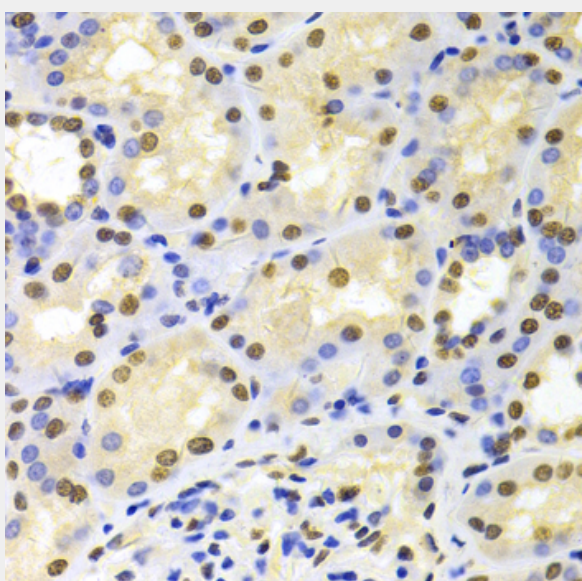
Immunohistochemistry of paraffin-embedded rat liver using HDGF Antibody at dilution of 1:100 (40x lens).



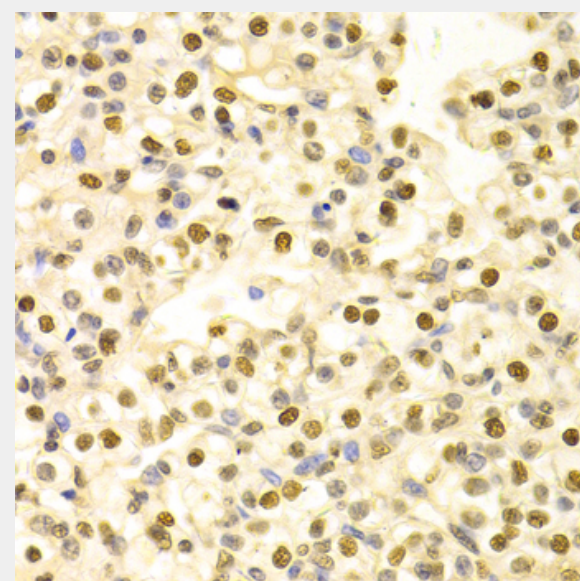
Immunohistochemistry of paraffin-embedded rat brain using HDGF Antibody at dilution of 1:100 (40x lens).



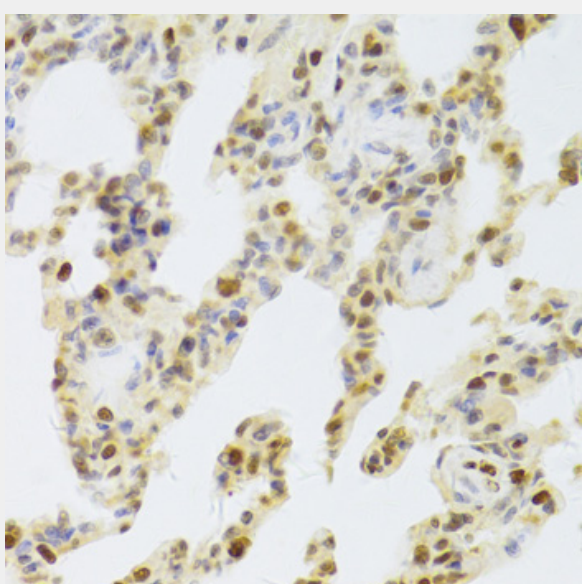
Immunohistochemistry of paraffin-embedded rat kidney using HDGF Antibody at dilution of 1:100 (40x lens).



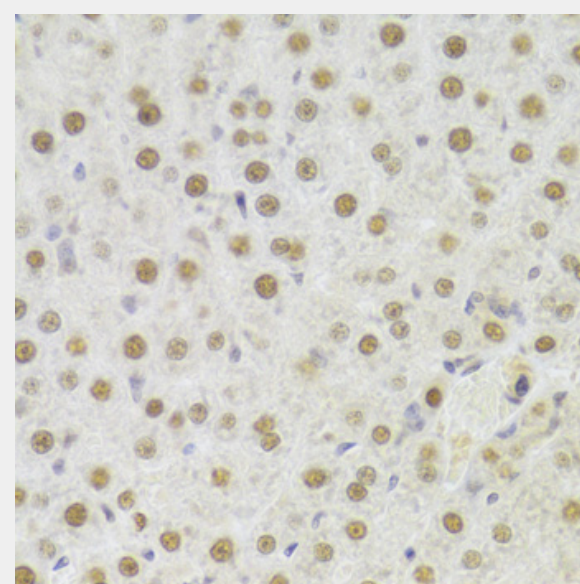
Immunohistochemistry of paraffin-embedded human kidney using HDGF Antibody at dilution of 1:100 (40x lens).



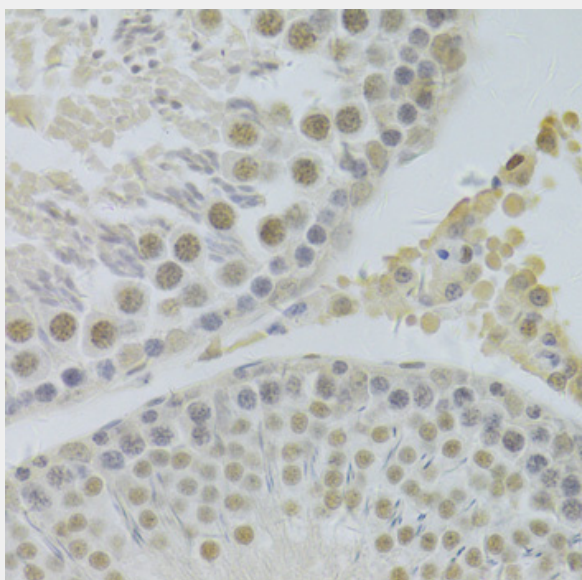
Immunohistochemistry of paraffin-embedded human kidney cancer using HDGF Antibody at dilution of 1:100 (40x lens).



Immunohistochemistry of paraffin-embedded rat lung using HDGF Antibody at dilution of 1:100 (40x lens).



Immunohistochemistry of paraffin-embedded rat liver using HDGF Antibody at dilution of 1:100 (40x lens).



Immunohistochemistry of paraffin-embedded rat testis using HDGF Antibody at dilution of 1:100 (40x lens).

All products are for RESEARCH USE ONLY. Not for diagnostic & therapeutic purposes!