

β actin Monoclonal Antibody

Catalog No: tcba13636



Available Sizes

Size: 50ul

Size: 100ul



Specifications

Application:

WB,IHC

Research Area:

Epigenetics & Nuclear Signaling,Epigenetic Modifications,Epigenetic Modifications_Methylation,Epigenetics & Nuclear Signaling,Epigenetic Modifications,Epigenetic Modifications_Methylation,

Species Reactivity:

Human, Mouse, Rat, Chicken, Zebrafish, Pig, Oryza sativa

Host Species:

Rabbit

Immunogen / Amino acids:

Recombinant protein of human β-actin

Conjugation:

Unconjugated

Clonality:

Monoclonal

Isotype:

IgG

Form:

Liquid

Storage Buffer:

Buffer: PBS with 0.02% sodium azide, 50% glycerol, pH7.3.

Recommended Dilution:

WB 1:50000 - 1:200000

IHC 1:200 - 1:2000

Storage Instruction:

Store at -20°C. Avoid freeze / thaw cycles.

Alternative Names:

ACTB; BRWS1; PS1TP5BP1; Beta-Actin;Actin

SwissProt:

P60709

Gene ID:

60 (human);

Calculated Molecular Weight:

41kDa

Purification:

Affinity purification

Protocol:

Put 5ul into 45ul Buffer (with 50% glycerol), dilute 1:10,000 for using. The diluted antibody can be stored at -20°C without aliquot

Cellular Location:

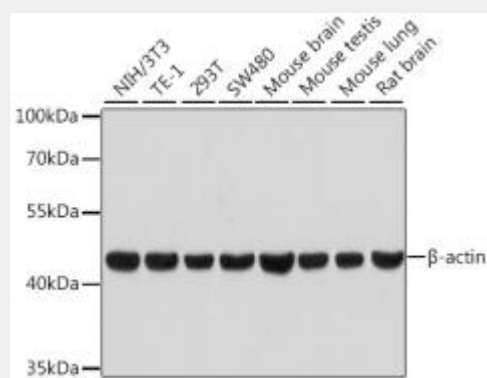
Cytoplasm,cytoskeleton,

Notes

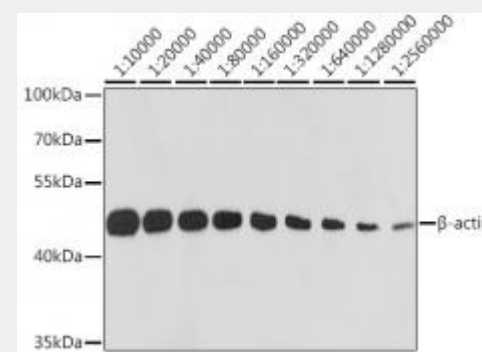
Loading control antibody

Product Description

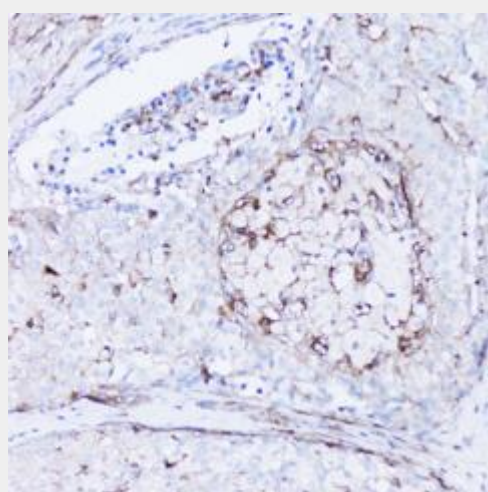
This gene encodes one of six different actin proteins. Actins are highly conserved proteins that are involved in cell motility, structure, and integrity. This actin is a major constituent of the contractile apparatus and one of the two nonmuscle cytoskeletal actins.



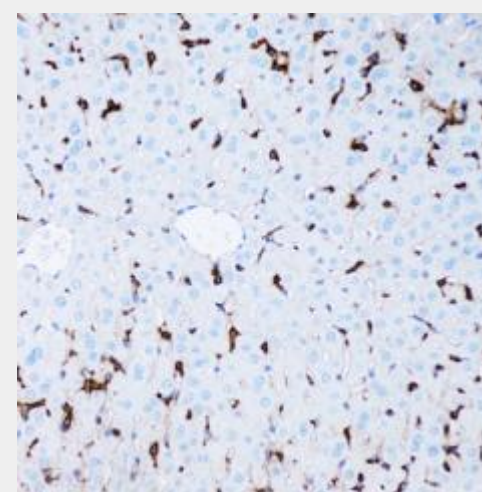
Western blot analysis of extracts of various cell lines, using β -actin antibody at 1:100000 dilution.
Secondary antibody: HRP Goat Anti-Rabbit IgG (H+L) at 1:10000 dilution.
Lysates/proteins: 25ug per lane.
Blocking buffer: 3% nonfat dry milk in TBST.
Detection: ECL Basic Kit.
Exposure time: 30s.



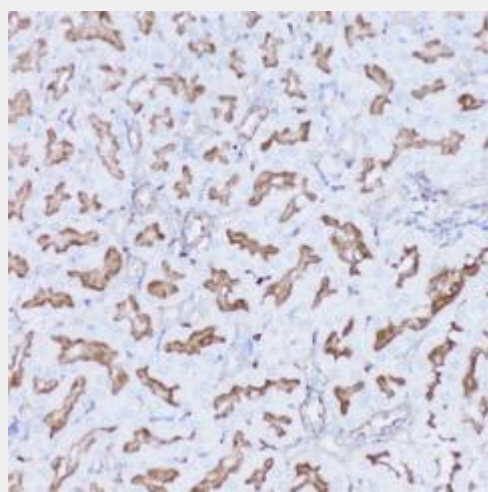
Western blot analysis of extracts of HeLa cells, using β -actin antibody at 1:10000-1:2560000 dilution.
Secondary antibody: HRP Goat Anti-Rabbit IgG (H+L) at 1:10000 dilution.
Lysates/proteins: 25ug per lane.
Blocking buffer: 3% nonfat dry milk in TBST.
Detection: ECL Basic Kit.
Exposure time: 10s.



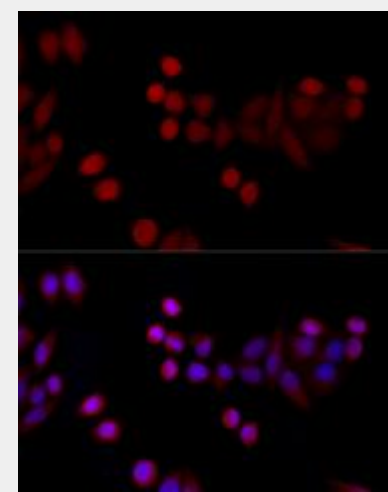
Immunohistochemistry of paraffin-embedded human breast cancer using β -actin antibody at dilution of 1:100 (20x lens).



Immunohistochemistry of paraffin-embedded mouse liver using β -actin antibody at dilution of 1:100 (20x lens).



Immunohistochemistry of paraffin-embedded rat kidney using β -actin antibody at dilution of 1:100 (20x lens).



Immunofluorescence analysis of HeLa cells using ACTB antibody at dilution of 1:100 (40x lens). Blue: DAPI for nuclear staining.

All products are for RESEARCH USE ONLY. Not for diagnostic & therapeutic purposes!