

# ACTB Polyclonal Antibody

Catalog No: tcba13641



## Available Sizes

**Size:** 50ul

**Size:** 100ul

**Size:** 200ul



## Specifications

**Application:**

WB,IHC,IF

**Research Area:**

Epigenetics & Nuclear Signaling,Epigenetic Modifications,Epigenetic Modifications\_Methylation,Epigenetics & Nuclear Signaling,Epigenetic Modifications,Epigenetic Modifications\_Methylation,

**Species Reactivity:**

Human,Mouse,Rat

**Host Species:**

Rabbit

**Immunogen / Amino acids:**

Recombinant fusion protein containing a sequence corresponding to amino acids 1-375 of human ACTB (NP\_001092.1).

**Conjugation:**

Unconjugated

**Clonality:**

Polyclonal

**Isotype:**

IgG

**Storage Buffer:**

Buffer: PBS with 0.02% sodium azide, 50% glycerol, pH7.3.

**Recommended Dilution:**

WB 1:500 - 1:2000

IHC 1:50 - 1:200

IF 1:50 - 1:200

**Storage Instruction:**

Store at -20°C. Avoid freeze / thaw cycles.

**Alternative Names:**

BRWS1;PS1TP5BP1

**SwissProt:**

P60709

**Gene ID:**

60 (human);

**Calculated Molecular Weight:**

41kDa

**Purification:**

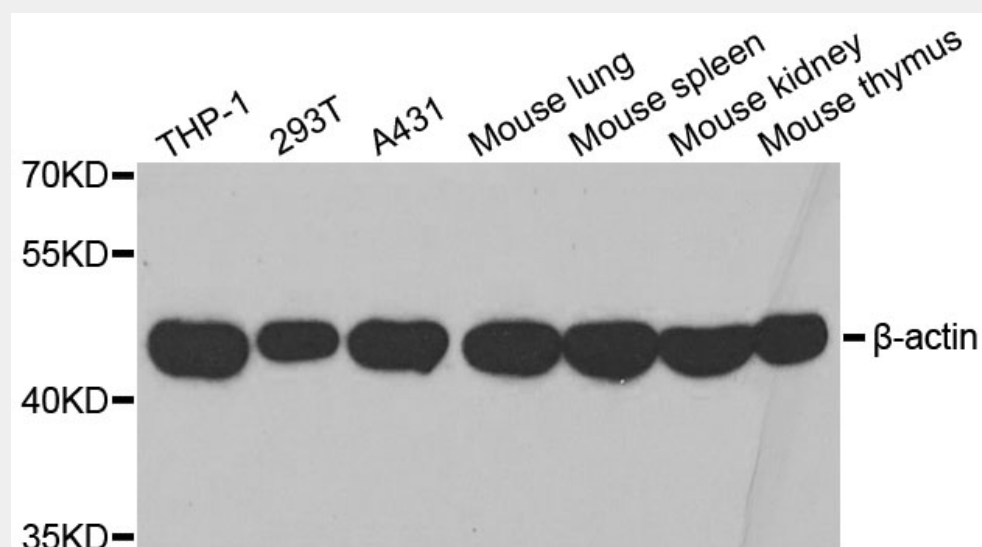
Affinity purification

**Cellular Location:**

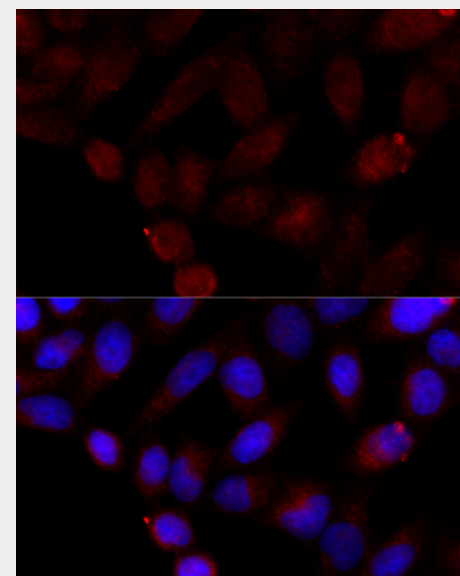
Cytoplasm,cytoskeleton,

**Product Description**

This gene encodes one of six different actin proteins. Actins are highly conserved proteins that are involved in cell motility, structure, and integrity. This actin is a major constituent of the contractile apparatus and one of the two nonmuscle cytoskeletal actins.



Western blot analysis of extracts of various cell lines, using  $\beta$ -actin antibody at 1:1000 dilution.  
Secondary antibody: HRP Goat Anti-Rabbit IgG (H+L) at 1:10000 dilution.  
Lysates/proteins: 25ug per lane.  
Blocking buffer: 3% nonfat dry milk in TBST.  
Detection: ECL Basic Kit.  
Exposure time: 90s.



Immunofluorescence analysis of HeLa cells using ACTB antibody at dilution of 1:100 (40x lens). Blue: DAPI for nuclear staining.

All products are for RESEARCH USE ONLY. Not for diagnostic & therapeutic purposes!