

# Recombinant Rabbit Anti-Human IgG3 Antibody- sodium azide free

Catalog No: tcna4770saf



## Available Sizes

**Size:** 100ug



## Specifications

**Application:**

ICC, IHC, FACS, ELISA

**Species Reactivity:**

Human

**Host Species:**

Rabbit

**Immunogen / Amino acids:**

Human IgG3 was used as the immunogen for this recombinant Human IgG3 antibody.

**Conjugation:**

Purified

**Clonality:**

Recombinant Rabbit Monoclonal

**Clones:**

RM119

**Isotype:**

Rabbit IgG

**Form:**

Liquid

**Storage Buffer:**

1 mg/ml in PBS without glycerol/BSA/sodium azide

### Recommended Dilution:

ELISA: 50ng/well - 200ng/well (Capture); 0.05-0.2ug/ml (Detection)

Immunocytochemistry: 0.5-2ug/ml

Immunohistochemistry: 0.5-2ug/ml The stated application concentrations are suggested starting points. Titration of the recombinant Human IgG3 antibody may be required due to differences in protocols and secondary/substrate sensitivity.

### Storage Instruction:

Store the recombinant Human IgG3 antibody at -20oC (with glycerol) or aliquot and store at -20oC (without glycerol).

### SwissProt:

P01860

### Gene ID:

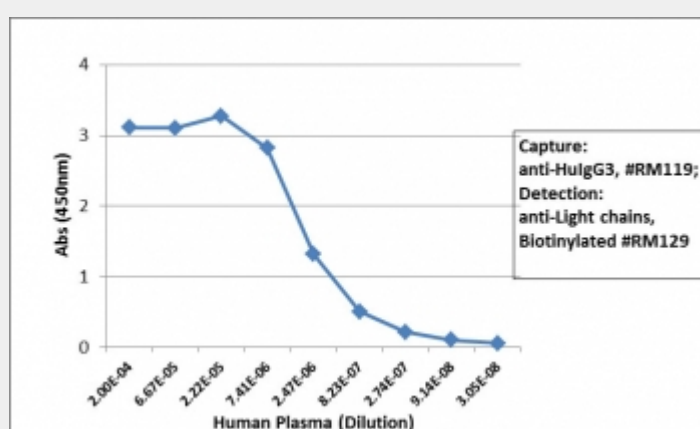
3502 (human);

## References

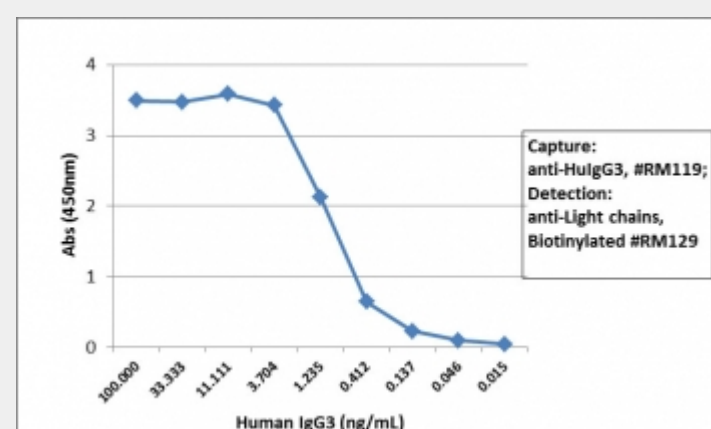
Purified

## Product Description

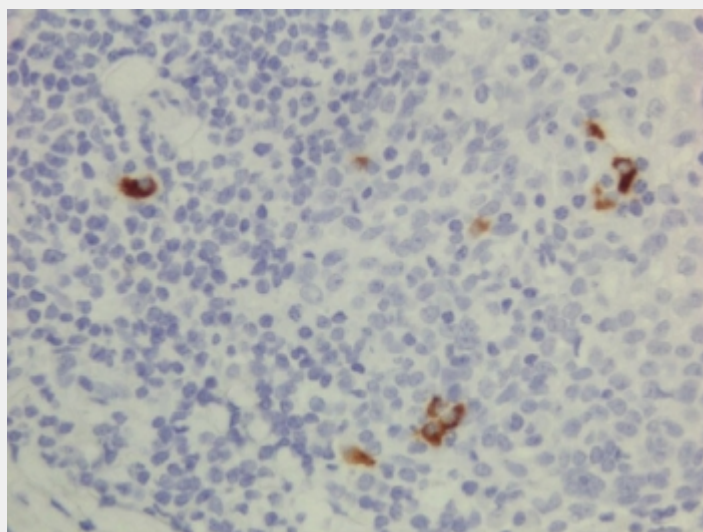
This recombinant Human IgG3 antibody reacts to the heavy chain of hIgG3. No cross reactivity with IgG1, IgG2, IgG4, IgM, IgA, IgD, IgE, mouse/rat/goat IgG.



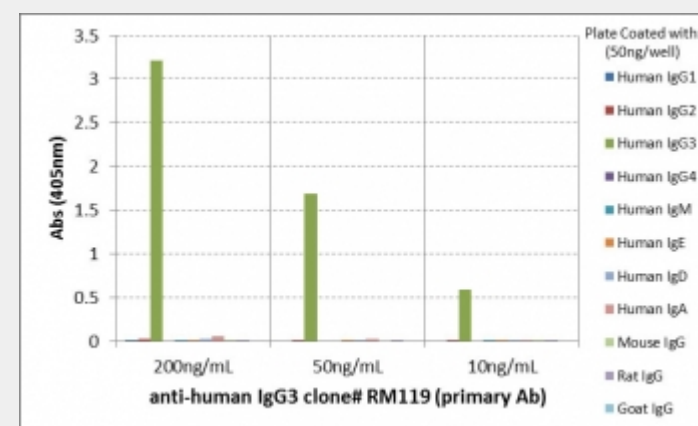
Sandwich ELISA with human plasma using recombinant Human IgG3 antibody as the capture, and [biotinylated anti-human light chains \(, kappa+, lambda\) antibody RM129](#) as the detect, followed by an AP conjugated streptavidin.



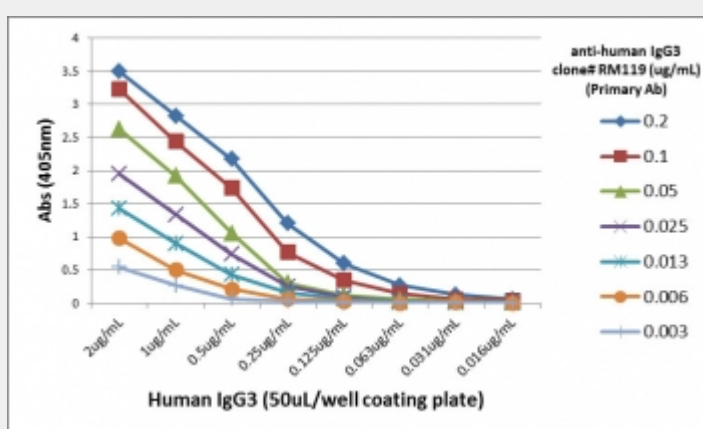
Sandwich ELISA with human IgG3 using recombinant Human IgG3 antibody as the capture, and [biotinylated anti-human light chains \(, kappa+, lambda\) antibody RM129](#) as the detect, followed by an AP conjugated streptavidin.



IHC testing of FFPE human lymphoid tissue with recombinant Human IgG3 antibody. A pH6 Citrate buffer or pH9 Tris/EDTA buffer HIER step is recommended for testing of FFPE tissue sections.



ELISA of human immunoglobulins shows recombinant Human IgG3 antibody reacts only to hIgG3. No cross reactivity with IgG1, IgG2, IgG4, IgE, IgD, IgA, mouse/rat/goat IgG.



ELISA Titration: the plate was coated with different amounts of hIgG3. A serial dilution of recombinant Human IgG3 antibody was used as the primary and an alkaline phosphatase conjugated anti-rabbit IgG as the secondary.

All products are for RESEARCH USE ONLY. Not for diagnostic & therapeutic purposes!