

# Mouse Anti-Human IgM Heavy Chain Antibody

Catalog No: tcna170



## Available Sizes

**Size:** 20ug

**Size:** 100ug



## Specifications

**Application:**

WB, FACS, IHC-P, IF

**Species Reactivity:**

Human. Other species not known.

**Host Species:**

Mouse

**Immunogen / Amino acids:**

Recombinant heavy chain of human IgM was used as the immunogen for this antibody.

**Conjugation:**

Unconjugated

**Clonality:**

Monoclonal

**Clones:**

IM373

**Isotype:**

Mouse IgG1, kappa

**Form:**

Liquid

**Storage Buffer:**

0.2 mg/ml in 1X PBS with 0.1 mg/ml BSA (US sourced) and 0.05% sodium azide

**Concentration:**

0.2 mg/ml

**Recommended Dilution:**

FACS: 0.5-1ug/million cells

IF: 0.5-1ug/ml

WB: 0.5-1ug/ml

IHC (FFPE): 0.5-1ug/ml for 30 minutes at RT (1)

Prediluted format : incubate for 30 min at RT (2)The concentration stated for each application is a general starting point. Variations in protocols secondaries and substrates may require the antibody to be titered up or down for optimal performance.

1. Staining of formalin-fixed tissues requires boiling tissue sections in 10mM citrate buffer

pH 6.0

for 10-20 min followed by cooling at RT for 20 minutes.

2. The prediluted format is supplied in a dropper bottle and is optimized for use in IHC. After epitope retrieval step (if required)

drip mAb solution onto the tissue section and incubate at RT for 30 min.

**Storage Instruction:**

Store the IgM heavy chain antibody at 2-8oC (with azide) or aliquot and store at -20oC or colder (without azide).

**SwissProt:**

P01871 & P20769

**Gene ID:**

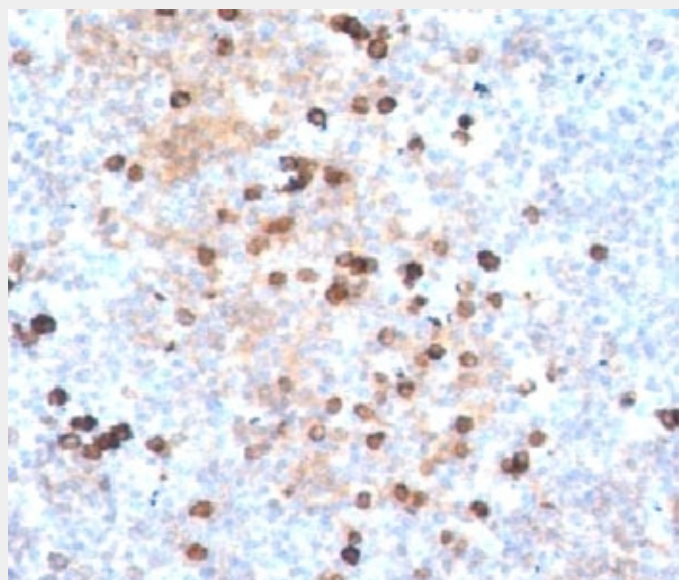
3507 (human);

**References**

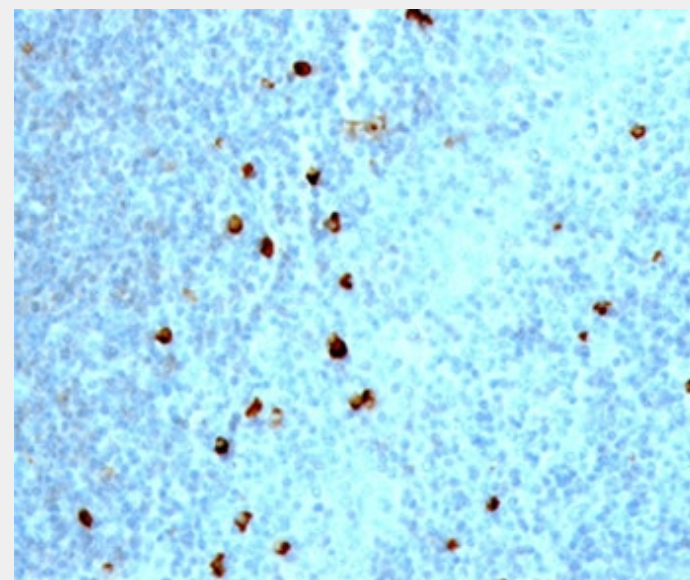
Protein G affinity chromatography

**Product Description**

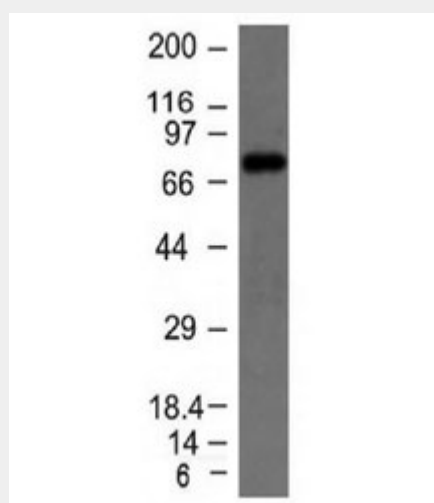
This antibody recognizes a protein of 75kDa, identified as the mu heavy chain of human immunoglobulins. It does not cross-react with alpha (IgA), gamma (IgG), epsilon (IgE), or delta (IgD), heavy chains, T-cells, monocytes, granulocytes, or erythrocytes. The antibody is useful in the identification of leukemias, plasmacytomas, and certain non-Hodgkin's lymphomas. The most common feature of these malignancies is the restricted expression of a single heavy chain class. Demonstration of clonality in lymphoid infiltrates indicates that the infiltrate is clonal and therefore malignant.



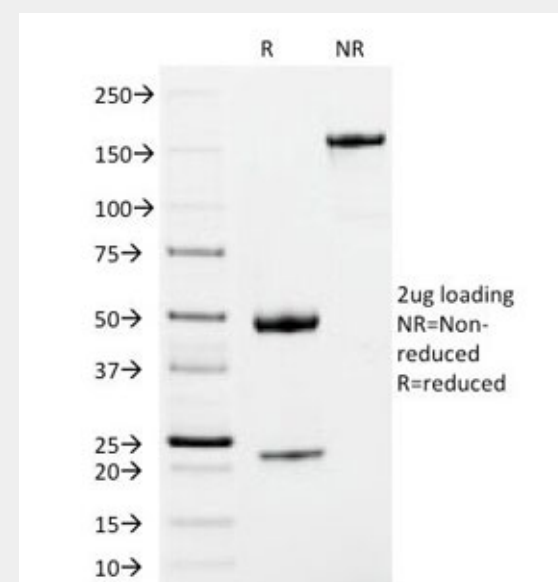
IHC testing of human tonsil stained with IgM heavy chain antibody.



IHC testing of human tonsil stained with IgM heavy chain antibody.



Western blot testing of Raji cell lysate with IgM heavy chain antibody.



SDS-PAGE Analysis of Purified, BSA-Free IgM Heavy Chain Antibody (clone IM373).  
Confirmation of Integrity and Purity of the Antibody.

All products are for RESEARCH USE ONLY. Not for diagnostic & therapeutic purposes!