

Mouse Anti-Human IgM Heavy Chain Antibody- prediluted

Catalog No: tcna170pre



Available Sizes

Size: 7ml



Specifications

Application:

IHC-P

Species Reactivity:

Human. Other species not known.

Host Species:

Mouse

Immunogen / Amino acids:

Recombinant heavy chain of human IgM was used as the immunogen for this antibody.

Conjugation:

Unconjugated

Clonality:

Monoclonal

Clones:

IM373

Isotype:

Mouse IgG1, kappa

Form:

Liquid

Storage Buffer:

Prediluted in 1X PBS with 0.1 mg/ml BSA (US sourced) and 0.05% sodium azide; *For IHC use only*

Recommended Dilution:

Prediluted IHC only format : incubate for 30 min at RT (2)The concentration stated for each application is a general starting point. Variations in protocols secondaries and substrates may require the antibody to be titered up or down for optimal performance.

1. Staining of formalin-fixed tissues requires boiling tissue sections in 10mM citrate buffer pH 6.0 for 10-20 min followed by cooling at RT for 20 minutes.
2. The prediluted format is supplied in a dropper bottle and is optimized for use in IHC. After epitope retrieval step (if required) drip mAb solution onto the tissue section and incubate at RT for 30 min.

Storage Instruction:

Store the IgM heavy chain antibody at 2-8oC (with azide) or aliquot and store at -20oC or colder (without azide).

SwissProt:

P01871 & P20769

Gene ID:

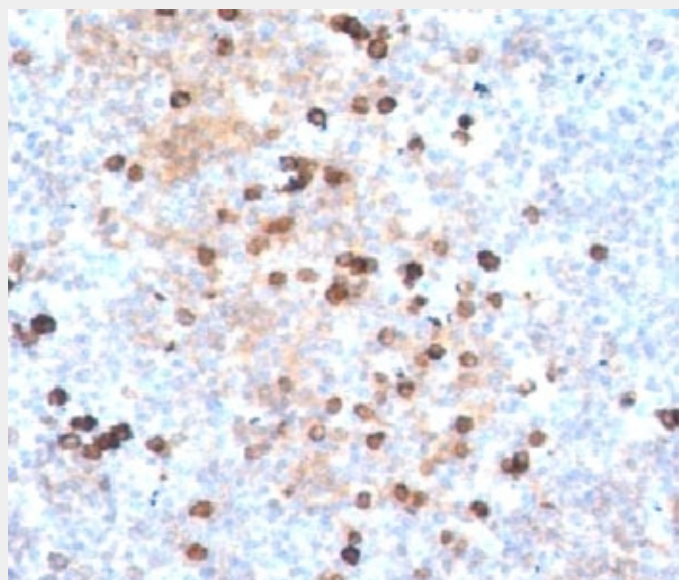
3507 (human);

References

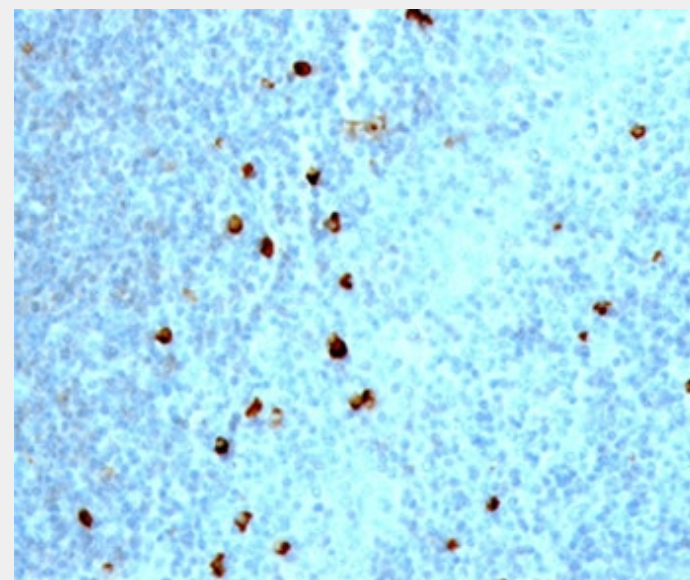
Protein G affinity chromatography

Product Description

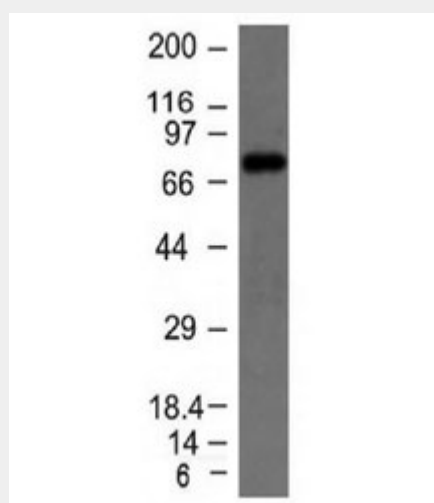
This antibody recognizes a protein of 75kDa, identified as the mu heavy chain of human immunoglobulins. It does not cross-react with alpha (IgA), gamma (IgG), epsilon (IgE), or delta (IgD), heavy chains, T-cells, monocytes, granulocytes, or erythrocytes. The antibody is useful in the identification of leukemias, plasmacytomas, and certain non-Hodgkin's lymphomas. The most common feature of these malignancies is the restricted expression of a single heavy chain class. Demonstration of clonality in lymphoid infiltrates indicates that the infiltrate is clonal and therefore malignant.



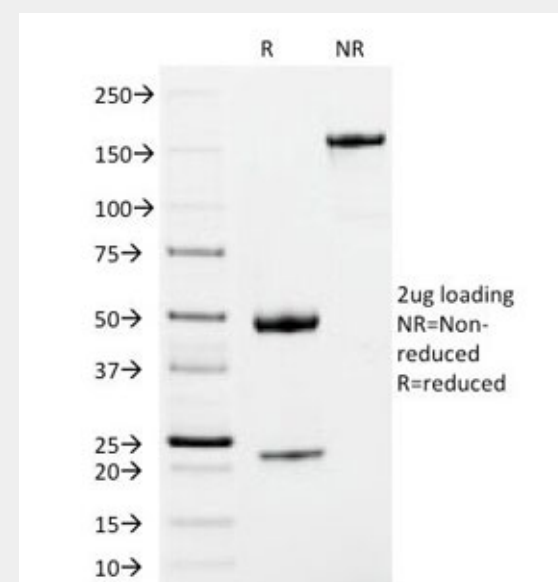
IHC testing of human tonsil stained with IgM heavy chain antibody.



IHC testing of human tonsil stained with IgM heavy chain antibody.



Western blot testing of Raji cell lysate with IgM heavy chain antibody.



SDS-PAGE Analysis of Purified, BSA-Free IgM Heavy Chain Antibody (clone IM373).
Confirmation of Integrity and Purity of the Antibody.

All products are for RESEARCH USE ONLY. Not for diagnostic & therapeutic purposes!