

# Alexa Fluor 488-conjugated AffiniPure Goat Anti-Mouse IgG (H+L)

Catalog No: tcba13742



## Available Sizes

**Size:** 100μl



## Specifications

**Host Species:**

Goat

**Conjugation:**

Alexa Fluor 488

**Isotype:**

Alexa Fluor 488 conjugated IgG

**Recommended Dilution:**

ImmunoFluorescent 1:100 - 1:800 Flow Cytometry 1:100 - 1:800

**Tested Application:**

ImmunoFluorescent; Flow Cytometry

**Storage Instruction:**

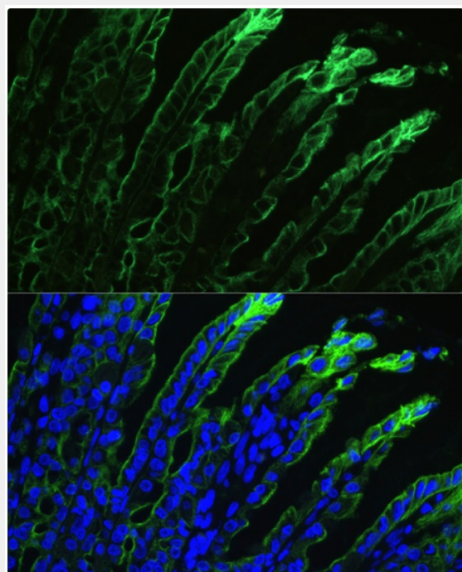
Store at -20°C. Avoid freeze / thaw cycles. Buffer: PBS with 0.02% sodium azide, 50% glycerol, pH7.3.

**Purification:**

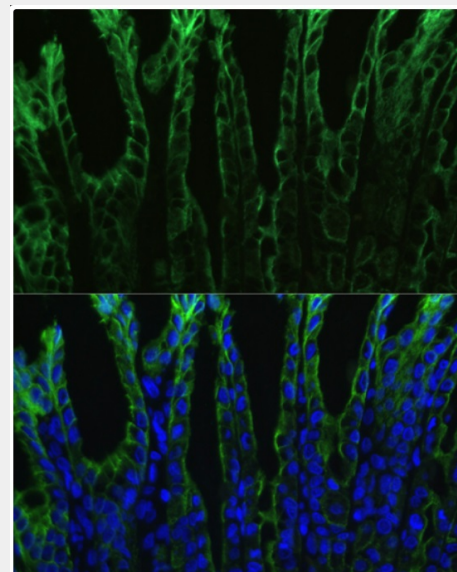
Affinity purification

## Product Description

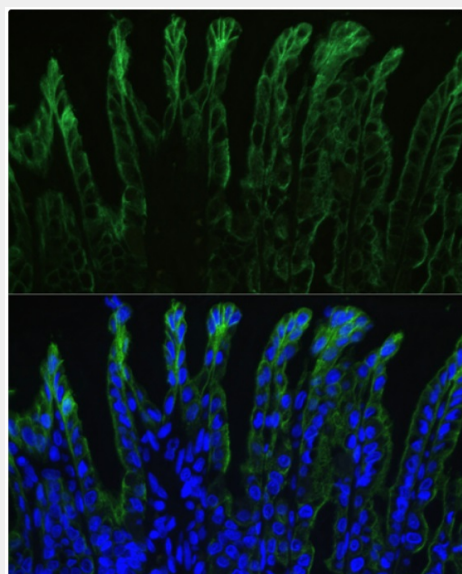
Alexa Fluor 488-conjugated AffiniPure Goat Anti-Mouse IgG (H+L)



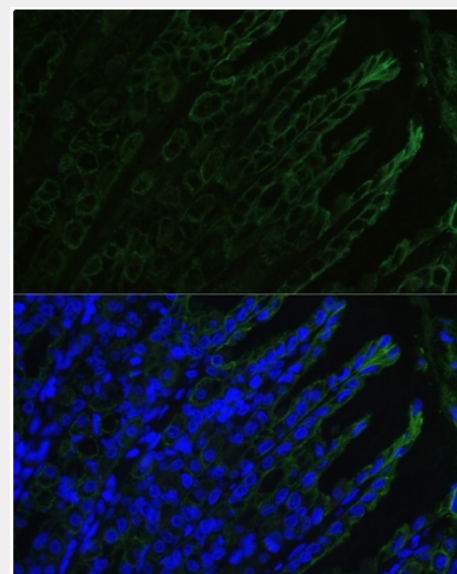
Immunofluorescence analysis of rat stomach, using CK19 antibody as the primary antibody at dilution of 1:1000. The cells were incubated with the primary antibody overnight at 4°C. Secondary antibody: Alexa Fluor 488-conjugated AffiniPure Goat Anti-Mouse IgG(H+L) (tcba13742) at 1:100 dilution. Blue: DAPI for nuclear staining.



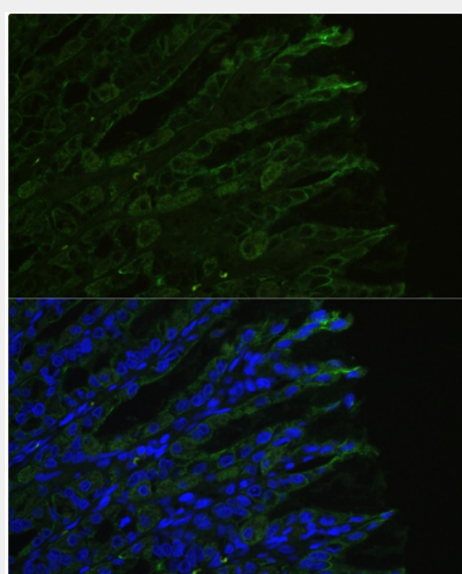
Immunofluorescence analysis of rat stomach, using CK19 antibody as the primary antibody at dilution of 1:1000. The cells were incubated with the primary antibody overnight at 4°C. Secondary antibody: Alexa Fluor 488-conjugated AffiniPure Goat Anti-Mouse IgG(H+L) (tcba13742) at 1:200 dilution. Blue: DAPI for nuclear staining.



Immunofluorescence analysis of rat stomach, using CK19 antibody as the primary antibody at dilution of 1:1000. The cells were incubated with the primary antibody overnight at 4°C. Secondary antibody: Alexa Fluor 488-conjugated AffiniPure Goat Anti-Mouse IgG(H+L) (tcba13742) at 1:400 dilution. Blue: DAPI for nuclear staining.



Immunofluorescence analysis of rat stomach, using CK19 antibody as the primary antibody at dilution of 1:1000. The cells were incubated with the primary antibody overnight at 4°C. Secondary antibody: Alexa Fluor 488-conjugated AffiniPure Goat Anti-Mouse IgG(H+L) (tcba13742) at 1:800 dilution. Blue: DAPI for nuclear staining.



Immunofluorescence analysis of rat stomach, using CK19 antibody as the primary antibody at dilution of 1:1000. The cells were incubated with the primary antibody overnight at 4°C. Secondary antibody: Alexa Fluor 488-conjugated AffiniPure Goat Anti-Mouse IgG(H+L) (tcba13742) at 1:1000 dilution. Blue: DAPI for nuclear staining.

All products are for RESEARCH USE ONLY. Not for diagnostic & therapeutic purposes!

Alexa Fluor is a registered trademark of Life Technologies Corporation