

# CFPAC-1

**Catalog No: tcel59**



## Available Sizes

**Size:** 1×10<sup>6</sup>cells/t25culturebottle



## Specifications

### Application:

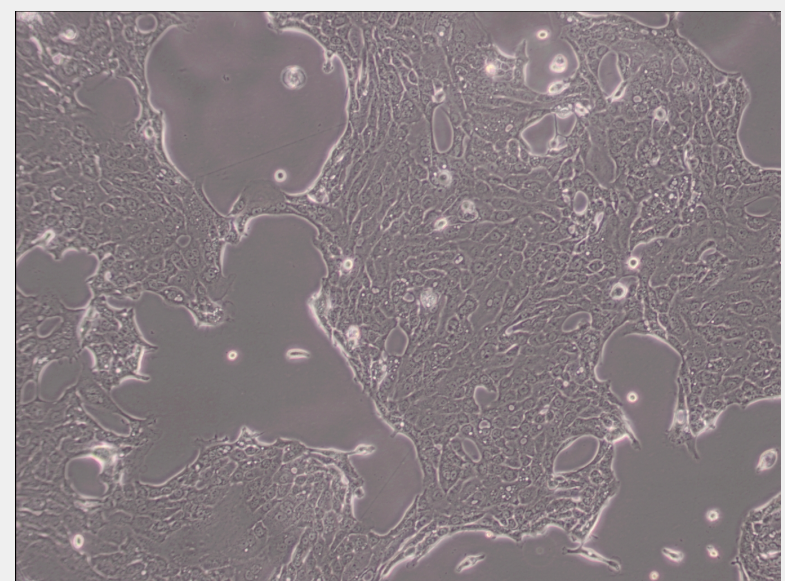
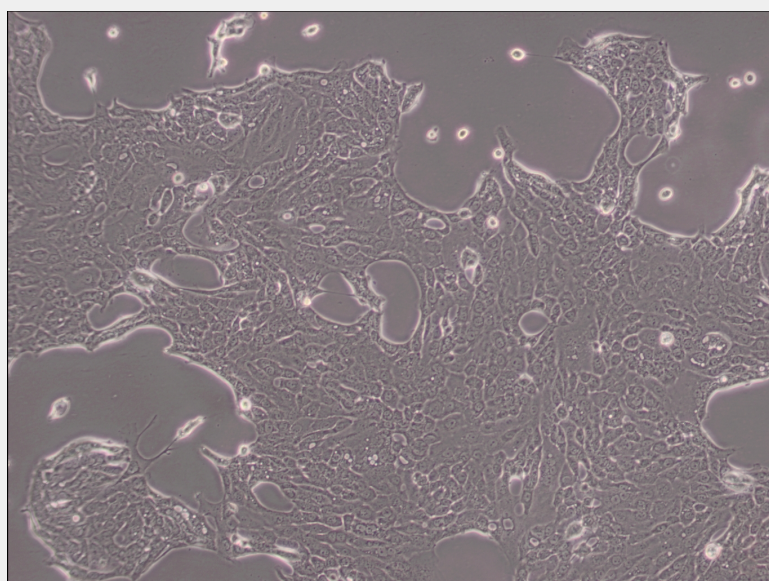
transfection host

### Subculturing:

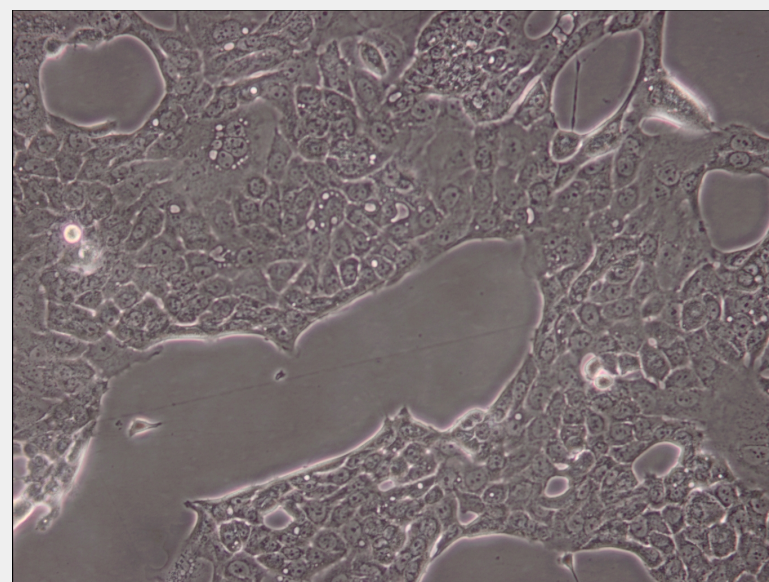
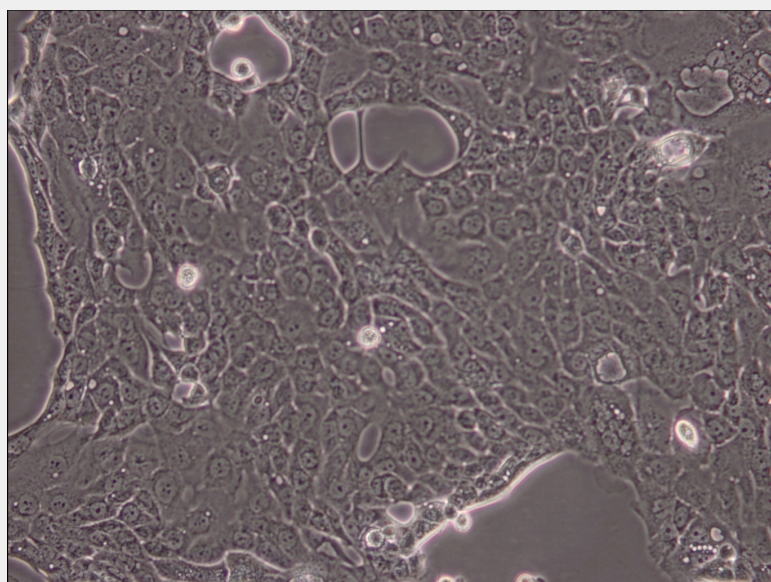
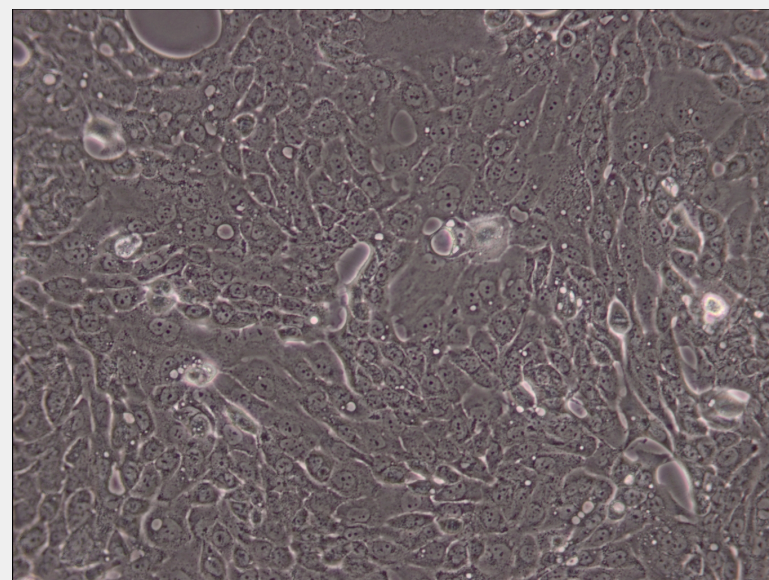
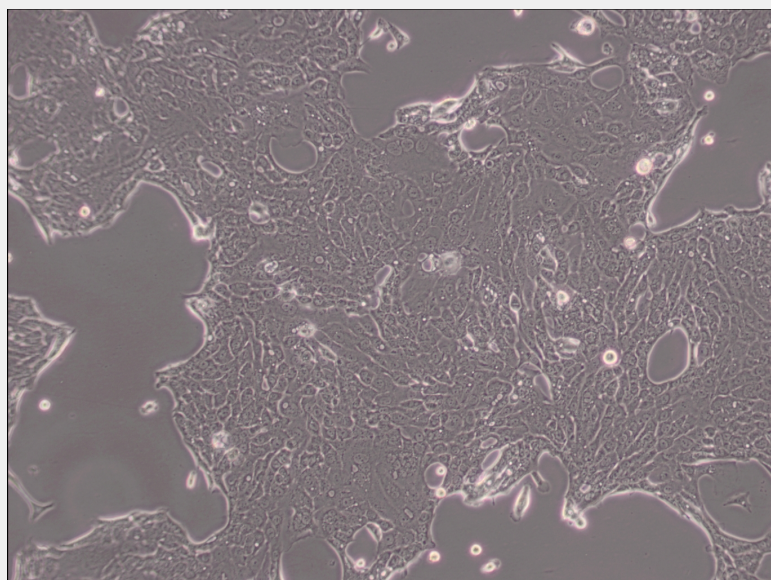
Remove and discard culture medium. Briefly rinse the cell layer with DPBS solution to remove all traces of serum that contains trypsin inhibitor. Add 1.0 to 2.0 mL of Trypsin-EDTA solution to flask and observe cells under an inverted microscope until cell layer is dispersed (usually within 2 to 3 minutes). Cells that are difficult to detach may be placed at 37°C to facilitate dispersal. Add 4.0 to 6.0 mL of complete growth medium and aspirate cells by gently pipetting. Add appropriate aliquots of the cell suspension to new culture vessels.

## Product Description

The cells exhibit ion transport activities consistent with cystic fibrosis and express the product of the CF gene(cystic fibrosis transmembrane regulator, CFTR).CFPAC-1 cells show no effect of cAMP agonists, adenylyl cyclase stimulators or phosphodiesterase inhibitors on Cl<sup>-</sup> flux, but do respond to Ca<sup>2+</sup> ionophores with increase Cl<sup>-</sup> efflux.The cells have the most common form of the CF mutation, deletion of three nucleotides resulting in the absence of phenylalanine at position 508.CFPAC-1 cells have epithelial morphology and polarization with apical microvilli, tight junctions and gap junctions.







All products are for RESEARCH USE ONLY. Not for diagnostic & therapeutic purposes!